


Configuring Traps

Use the Configure Traps wizard to configure switches to send traps to the OmniVista server. To launch the Configure Traps wizard, click the **Configure Traps** icon  in the toolbar.

Until you configure traps and set the NMS trap subscription state to **On**, you will not be able to receive or view any trap notifications through the Notifications Log.

Configuring traps is a two-part process: first you select the switches for which you want to configure traps, then you specify the traps you want to be sent to the OmniVista server. At the end of the process, OmniVista displays a summary of all the switches and traps you selected, and indicates whether the configuration was successful or not.

Currently, the Configure Traps wizard supports trap configuration for XOS, AOS, and 6200 Series switches. To learn how to configure traps for all other devices, see “Configuring Traps for Non-XOS/AOS/6200 Switches” on page 6.

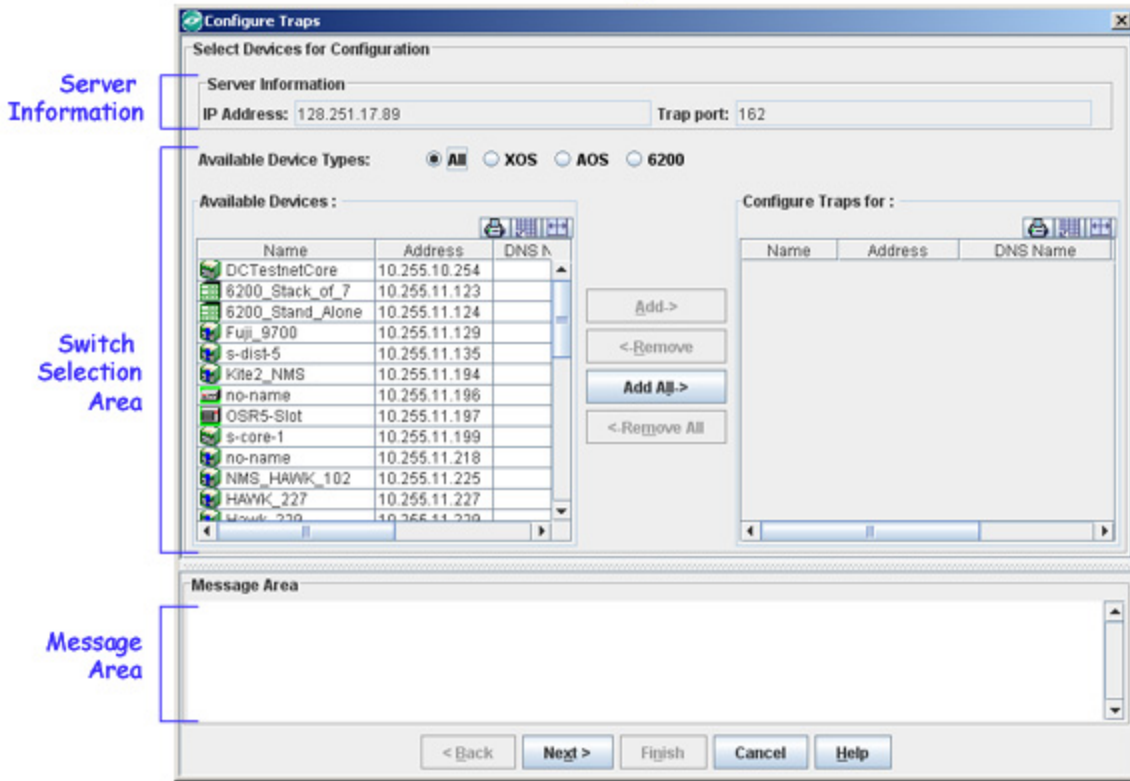
Note:

- The Configure Traps wizard can be launched from any application whose toolbar includes the **Configure Traps** icon. Currently, the Configure Traps wizard can be launched from either Notifications or Topology.
- In Topology, you can also invoke the Configure Traps wizard by right-clicking one or more switches in the All Discovered Devices table, then selecting Configure Traps from the pop-up menu. When this method is used, the pre-selected devices automatically appear in the "Selecting Switches" window.
- If you do not have administrative privileges, the Configure Traps button will be disabled.

Selecting Switches

The "Selecting Switches" window is divided into three main areas: (1) Server Information,(2) the Switch Selection Area, and (3) the Message Area. See below for detailed descriptions.

The Configure Traps Wizard
"Selecting Switches"



- **Server Information.** Shows the IP address of the OmniVista server, and the server port number on which traps are received. Both are read-only fields. The trap port number is set using the **Trap Port Number** field in the Preferences window. For information on changing the port number, see the Preferences help: Setting Preferences > System-Wide Preferences > Notifications Stored.
- **Switch Selection Area.** Enables you to create a list of switches for which you want to configure traps. The list of selected switches displays in the "Configure Traps for:" pane.
- **Message Area.** Displays messages related to trap configuration. These messages are also written to "trapconfig.log" in the Audit application (see the Audit help, "Getting Started with Audit").

Messages are color-coded as follows:

Color	Message Type	Example
Blue	General Information	A message listing the names of the devices for which you want to configure traps.
Black	Progress Information	A message telling you that certain switches were successfully configured.
Red	Error Message or Warning	"Table Full" - you must delete one or more subscriptions. "SNMP Timeout" - the switch may be busy; try again or

To select switches:

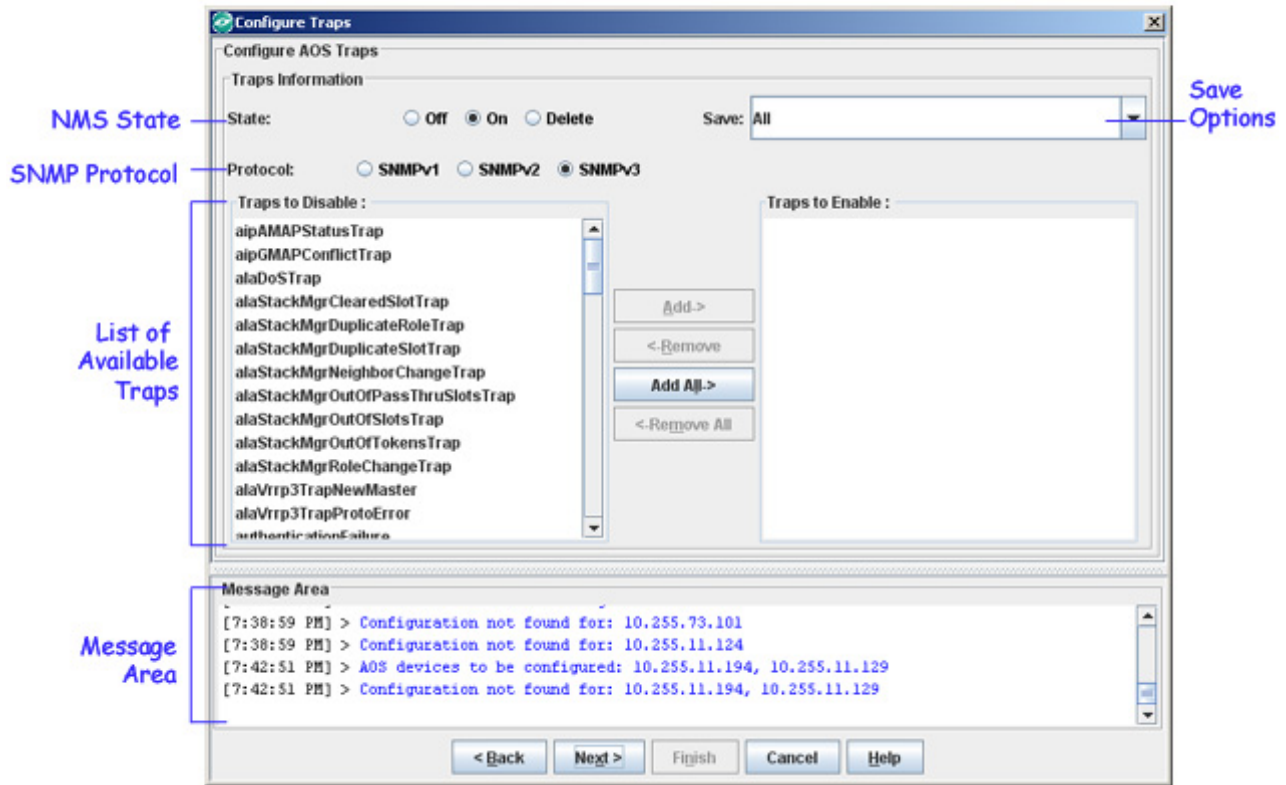
1. First, use the **Available Device Types** radio buttons to specify whether you want to see a list of **All** switches (XOS, AOS, and 6200), only **XOS** switches, only **AOS**, or only **6200** switches. Switches that are in a down state when (a) the "Selecting Switches" window first opens, or (b) a different device type is selected with the "Devices" radio buttons, will be considered "unavailable" and will therefore not be included in the list that displays through the Switches Available pane.
2. Use the **Add/Remove** buttons to create the list of switches for which you want to configure traps.
3. When you are done selecting switches, click the **Next** button, to continue to the next screen in the Configure Traps Wizard (the "Selecting Traps" window). The Message Area should list the switches you specified. If there were any difficulties connecting to the switch, or if the trap table is full, this will be indicated in the Message Area.

Selecting Traps

From the "Selecting Traps" screen (see the below illustration), select the traps that you want to send to the OmniVista server. There are two versions of this window: one for XOS switches, one for AOS and 6200 switches. They are identical except that the AOS/6200 version has one additional field - "Protocol."

In the previous window ("Selecting Switches"), if you selected both XOS and AOS switches, you will first see the "Selecting Traps" window for XOS switches, followed by the "Selecting Traps" window for AOS switches. In the example below, the window for AOS switches is shown.

Configure Traps Window
AOS Switches



Follow the steps below to specify the trap information.

1. State. Use the radio buttons to specify an NMS trap subscription state. The choices are:

On. The OmniVista Server will be notified about traps. (The default value is On.)

Off. The OmniVista Server will not be notified about traps.

Delete. Deletes the trap configuration information previously saved to the switch. Use the Delete option when the OmniVista server has been moved to a different computer and now has a different IP address.

2. Save. From the Save drop-down menu, select from one of the following options:

All. Saves all trap configuration information specified in the "Selecting Switches" and "Selecting Traps" windows, including port number, server IP address, selected switches, selected traps, state, and protocol.

Port Only. Saves only the port number and no other trap configuration information. Use this save option after configuring the OmniVista Server to receive traps on a different port.

Note: To change the port number, see the Preferences help: Setting Preferences > System-Wide Preferences > Notifications Stored.

State Only. Saves only the state information (On, Off, or Delete) and no other trap configuration information. If Delete is selected, the entry for the OmniVista server is removed from the trap configuration table for the selected switches.

Traps Only. Saves only the trap information specified. Does not save Port or State information.

Protocol Only (applies only to AOS switches). Saves only the protocol used to send traps to the NMS server (SNMPv1, SNMPv2, or SNMPv3).

Note: If you select one of the "Only" Save options (Port Only, State Only, Traps Only, or Protocol Only), and no trap information had previously been configured for the specified device, then, when you click **Finish**, the entire configuration displayed through the Configure Traps window will be saved. This is comparable to doing a Save "All."

3. Protocol (only applies to AOS/6200 switches). Specify the protocol used to send traps to the NMS server. The choices are: SNMPv1, SNMPv2, or SNMPv3. (The default value is SNMPv3.)

4. Use the Add/Remove buttons to select the traps to enable or disable. If "Save All" or "Save Traps Only" is selected, traps listed in the Available Traps pane will be disabled and traps listed in the Traps to Apply pane will be enabled.

Note: The following traps are displayed in The List of Available Traps for **6200** devices; however, they will not be issued by the switch, and therefore will not be received by OmniVista: endTftp, abortTftp, startTftp, rpMauJabberTrap, ifMauJabberTrap, pingProbeFailed, pingTestFailed, pingTestCompleted.

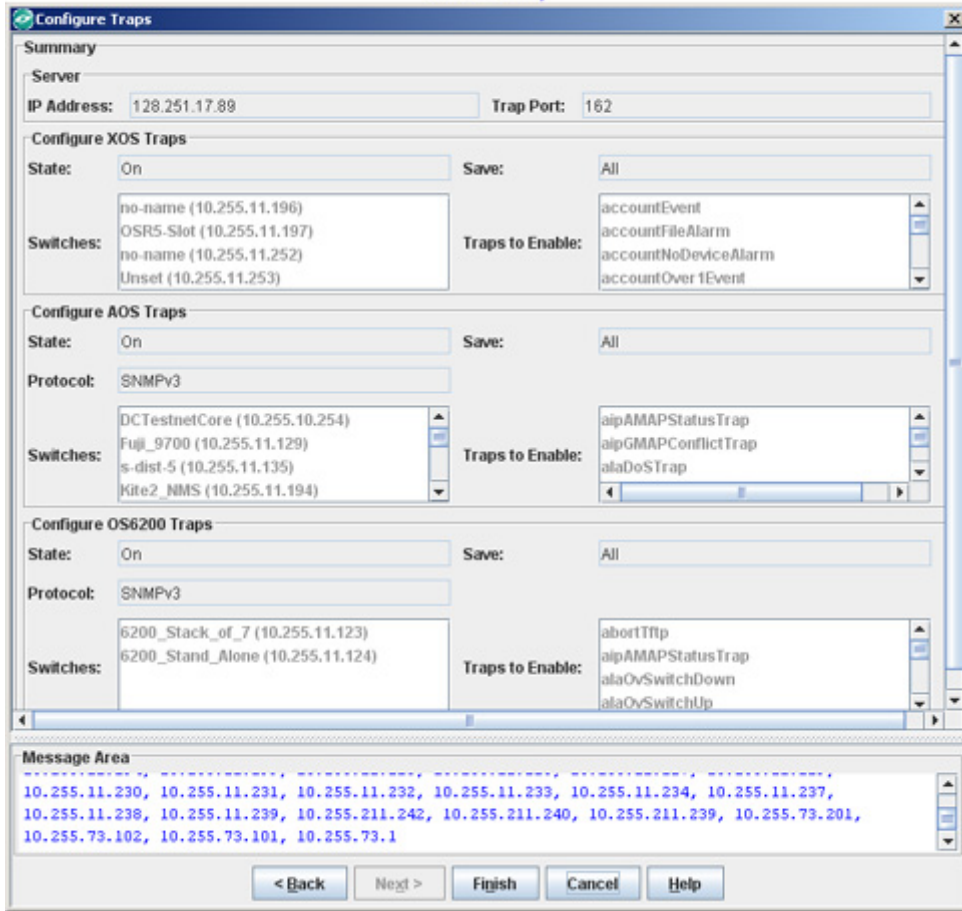
5. When you finish specifying the trap information, click the **Next** button, to continue to the last screen in the Configure Traps wizard (the Summary window).

Note: Depending on the switches you selected (XOS, AOS, or 6200), clicking the **Next** button will bring up a Traps window for each type of device (e.g., AOS Traps Window, 6200 Traps Window). When you are finished configuring traps for each device type, the Summary Window will appear.

Summary

The Summary screen shows all the configuration information that displayed previously through the Selecting Switches screen and the Selecting Traps screen, including Server IP address, trap port number, NMS state, Save option, and a list of all the switches and traps you selected.

Configure Traps Wizard Summary

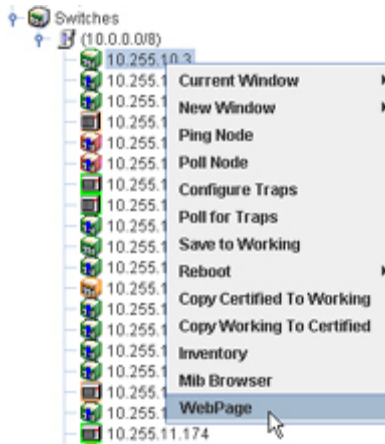


The message area confirms the list of switches you specified and provides information on any problems that may have been encountered. In this screen, you can do the following:

1. Review the information in the Summary screen. If you need to make changes, use the **Back** button to return to earlier windows. Otherwise, click **Finish**. The message area will tell you which configurations were successful and which were not.
2. Click **Cancel** to exit and return to the main application window.

Configuring Traps for Non-XOS/AOS/6200 Switches

To configure traps for a non-XOS/AOS/6200 switch, use the web configuration tool available for that particular device. To access the tool, go to the tree-control and right-click the switch for which you want to configure traps, then select WebPage (as shown below).



The tool will vary in its appearance, depending on the type of device you select. Generally, each tool provides its own online help information. Currently, there is a web configuration tool for each of the following devices:

- OmniStack 1024, 6024, 6124, and 8088
- OmniMss
- OmniCore 5052-V3see.

Note: OmniVista recognizes trap configuration changes made through the Configure Traps wizard only. It does not reflect trap configuration changes made through a non-XOS/AOS/6200 switch configuration WebPage.